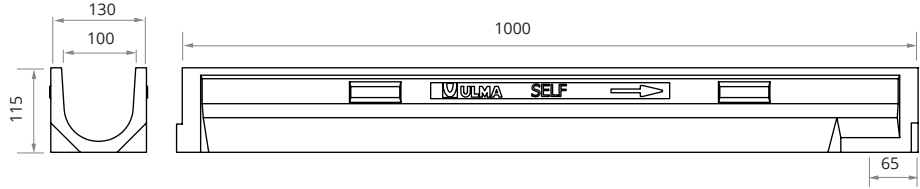
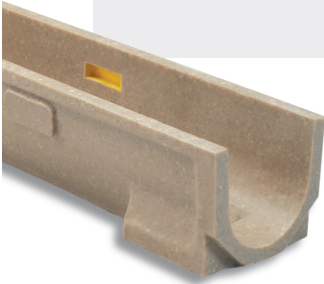


Load Class  
up to C250  
EN-1433 Standard

# SELF



ULMA Linear Drainage Channel type SELF: External width 130 mm; Internal width 100 mm and overall height 115 mm to collect rainwater in 1 metre long units. Locking system consists of locking bar CS100 and screws.

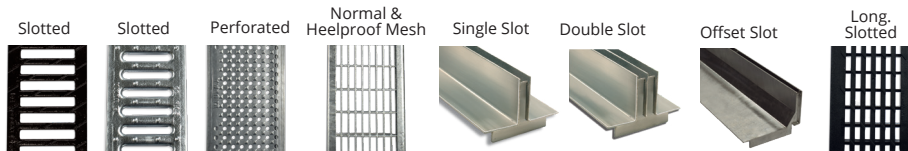


## CHANNEL

Code Channel	L mm	H mm	Width mm		Ø Outlet* mm		Hydraul. Section cm <sup>2</sup>	Pcs. pallet	Weight Kg	Qref l/s
			Ext.	Int.	Vert.	Hor.				
SELF	1000	115	130	100	110	-	85	105	8,4	3,0

\* Vertical outlets on order

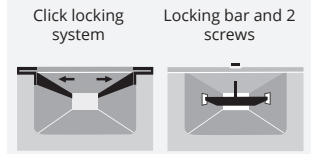
## GRATINGS



Material	Design	Load	Code	L mm	Width mm	Thickness mm	Opening mm	Weight Kg	Intake area cm <sup>2</sup> /ml
DUCTILE IRON	SLOTTED	B125	FNX100UCBM	500	130	6	14,9	2,1	530
	SLOTTED	C250	FNX100UCCM	500	130	6	13	2,7	435
GALVANISED STEEL	SLOTTED	A15	GN100UCA	1000	130	3	9	1,6	268
	PERFORATED	A15	GP100UCA	1000	130	3	Ø6	1,4	159
	SLOT*	A15	GR100UOAH25	1000	120	25	15	2,1	150
	MESH*	B125	GEX100UCB33	1000	130	2	30 x 30	3,2	837
	HEELPROOF MESH*	B125	GEHX100UCB	1000	130	2	30 x 10	3,9	749
	SLOT*	C250	GR100UOC	1000	130	70	15	4,8	150
	DOUBLE SLOT*	C250	GDR100UOC	1000	130	70	2 x 12	5,5	240
	OFFSET SLOT*	C250	GRL100UOC	1000	130	70	10	4,8	100
STAINLESS STEEL	SLOTTED	A15	IN100UCA	1000	130	3	7	1,5	218
	PERFORATED	A15	IP100UCA	1000	130	3	Ø6	1,7	159
COMPOSITE	LONG. SLOTTED BLACK	A15	PNLH100UCAM	500	130	3	8	0,3	367
	LONG. SLOTTED GREY	A15	PNLH100UCAM- GRIS	500	130	3	8	0,3	367
	LONG. SLOTTED BEIGE	A15	PNLH100UCAM- BG	500	130	3	8	0,3	367

\* Available in stainless steel, consult design

## HOW TO FIX



Code	Units ml
TEF840 + CS100	2 + 2
TEF840 + CS100	2 + 2
(1) TNPC850 + CS100	2 + 2
TNPC850 + CS100	2 + 2
(2)	(2)
TEF840 + CS100	2 + 2
TEF840 + CS100	2 + 2
(2)	(2)
(2)	(2)
(2)	(2)
TXNPC850 + CS100INOX	2 + 2
TXNPC850 + CS100INOX	2 + 2
(1) TXE840 + CS100INOX	2 + 2
(1) TXE840 + CS100INOX	2 + 2
(1) TXE840 + CS100INOX	2 + 2

(1) Click. Without screws.  
(2) Supported

## SUMP UNITS

Code	L mm	H mm	Width mm	Lateral outlets Ø mm	Front outlet Ø mm	Sump units	Weight Kg
AEURO100	500	300	130	90/110	90	1	14,4

## BUCKET

Code
CEURO100

## OPEN END CAP

Code	Ø mm
TSELF100A	90

## CLOSED END CAP

Code
TSELF100C