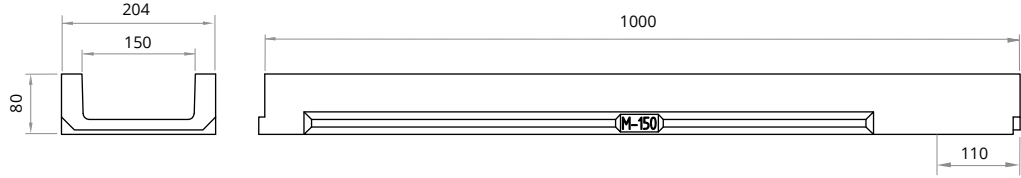


Load Class up to C250 EN-1433 Standard

M150



ULMA Linear Drainage Channel type M150: External width 204 mm; Internal width 150 mm and overall height 80 mm to collect rainwater in 1 metre long units. Locking system consists of 2 screws per metre.

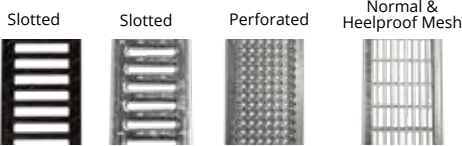


CHANNEL

Code Channel	L mm	H mm	Width mm		Ø Outlet* mm		Hydraul. Section cm²	Pcs. pallet	Weight Kg	Qref l/s
			Ext.	Int.	Vert.	Hor.				
M150	1000	80	204	150	160	-	89	72	15,5	2,5

* Vertical outlets on order

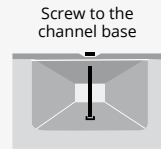
GRATING



Material	Design	Load	Code	L mm	Width mm	Thickness mm	Opening mm	Weight Kg	Intake area cm²/ml
DUCTILE IRON	SLOTTED	B125	FNX150UCBM	500	200	6	13,75	4,0	683
	SLOTTED	C250	FNX150UCCM	500	200	5	13,75	4,4	683
GALVANISED STEEL	SLOTTED*	A15	GN150UCA	1000	200	3	8	3,4	392
	PERFORATED	A15	GP150UCA	1000	200	3	Ø5	4,2	196
	MESH*	B125	GEX150UCB33	1000	200	2	30 x 30	5,0	1254
	HEELPROOF MESH*	B125	GEHX150UCB	1000	200	2	30 x 10	6,2	1116
STAINLESS STEEL	PERFORATED	A15	IP150UCA	1000	200	3	Ø5	4,4	196

* Available in stainless steel, consult design

HOW TO FIX



Code	Units ml
TEF865	2
TEF865	2
(1) TNPC870	2
TNPC870	2
TEF860	2
TEF860	2
TXNPC870	2

(1) Click. Without screws.

CLOSED END CAP

Code	Image
T150MC	

