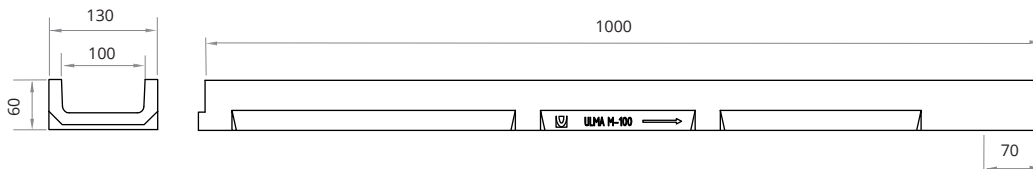


**Load Class**  
up to C250  
EN-1433 Standard

# M100

UK  
CA | CE

ULMA Linear Drainage Channel type M100: External width 130 mm; Internal width 100 mm and overall height 60 mm to collect rainwater in 1 metre long units. Locking system consists of 2 screws per metre.

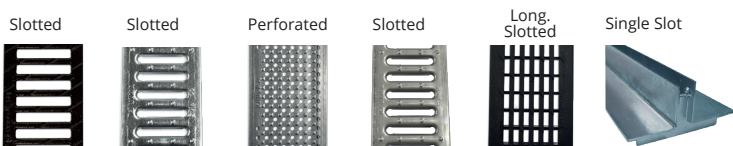


## CHANNEL

Code Channel	L mm	H mm	Width mm		Ø Outlet* mm		Hydraul. Section cm <sup>2</sup>	Pcs. pallet	Weight Kg	Qref l/s
			Ext.	Int.	Vert.	Hor.				
M100	1000	60	130	100	90	-	40	120	8,3	0,8

\* Vertical outlets on order

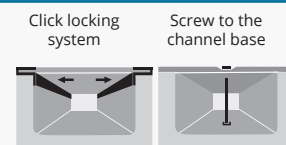
## GRATING



Material	Design	Load	Code	L mm	Width mm	Thickness mm	Opening mm	Weight Kg	Intake area cm <sup>2</sup> /ml
DUCTILE IRON	SLOTTED	B125	FNX100UCBM	500	130	6	14,9	2,1	530
	SLOTTED	C250	FNX100UCCM	500	130	7	13	2,7	435
GALVANISED STEEL	SLOTTED	A15	GN100UCA	1000	130	3	9	1,6	268
	PERFORATED	A15	GP100UCA	1000	130	3	Ø6	1,4	159
	SLOT*	A15	GR100UOAH25	1000	120	25	15	2,1	150
STAINLESS STEEL	SLOTTED	A15	IN100UCA	1000	130	3	7	1,5	218
	PERFORATED	A15	IP100UCA	1000	130	3	Ø6	1,7	159
COMPOSITE	LONG. SLOTTED BLACK	A15	PNLH100UCAM	500	130	3	8	0,3	367
	LONG. SLOTTED GRAY	A15	PNLH100UCAM GRIS	500	130	3	8	0,3	367
	LONG. SLOTTED BEIGE	A15	PNLH100UCAM BG	500	130	3	8	0,3	367

\* Available in stainless steel, consult design

## HOW TO FIX



Code	Units ml
TEF845	2
TEF845	2
(1) TNPC850	2
TNPC850	2
(2)	(2)
TXNPC850	2
TXNPC850	2
(1) TXE840	2
(1) TXE840	2
(1) TXE840+ CS100INOX	2+2

(1) Click. Without screws.  
(2) Supported.

## CLOSED END CAP

Code	
T100MC	

